

Clear-Lead™ Mobile Barriers

ASSEMBLY INSTRUCTIONS

042-580
042-582



BIODEX

Biodex Medical Systems, Inc.

This manual covers assembly instruction for the following products:

042-580 Mobile Barrier, Clear-Lead™, Regular Window
Window size 24" h x 30" w (61 x 76 cm)

042-582 Mobile Barrier, Clear-Lead™, Full Window
Window size 60" h x 30" w (152 x 76 cm)

Clear-Lead Mobile Barriers are intended to supply a minimum of
0.5mm lead equivalence radiation protection.

Assembly Instructions:

- 1) Unpack and locate:
 - a. One shield sub-assembly
 - b. Two leg sub-assemblies with casters
 - c. One bag containing the parts numbered 3 - 8 on schematic drawing
(See Figure 2.)
- 2) Lay shield sub-assembly on a flat surface (e.g., table) with the bottom extending over the edge. (See Figure 1.)

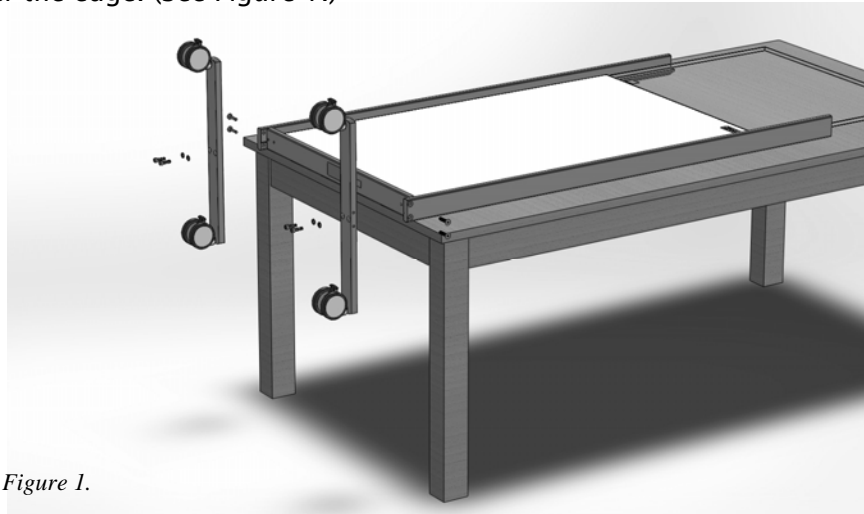


Figure 1.

- 3) Using provided ¼" Allen key - attach leg sub-assemblies from bottom with provided hex socket cap screws and washers. Do not fully tighten yet.
 - 4) Next apply 2-3 drops of Loctite to threads of flat-head screws, and using 3/16" Allen key - insert flat-head screws from both sides as shown on the drawing.
 - 5) Fully tighten the (4) flat-head screws.
 - 6) Now go back and fully tighten all (4) hex socket cap screws using the provided ¼" Allen key.
 - 7) Place the assembled barrier upright on its casters and carefully remove the masking paper from both sides of the window. Do not remove the protective paper before completing assembly to avoid accidental scratches.
-

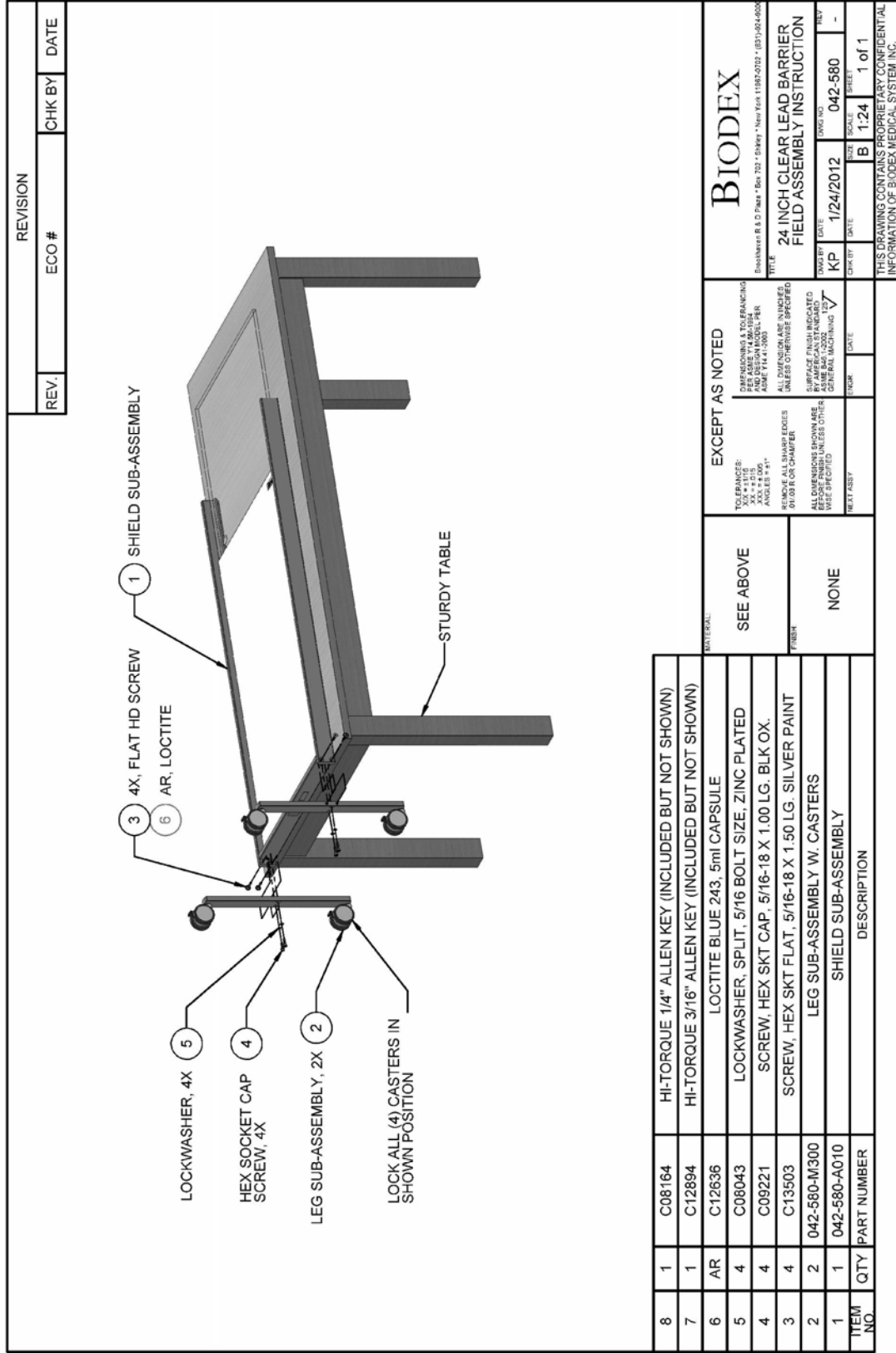


Figure 2.

Routine care and cleaning instructions

- 1) Clean Clear-Lead panel with a soft cloth, using water or ethanol if necessary. Do not leave Clear-Lead panel wet; dry it with a soft cloth.
- 2) Avoid any abrasive materials from coming in contact with Clear-Lead window panel
- 3) Scratches can be removed by using a quality acrylic polish such as Novus Polish #2



CAUTION: Avoid tipping barrier more than 10 degrees from perpendicular as it may fall over.



Certified Quality Management System

BIODEX

Biodex Medical Systems, Inc.

20 Ramsey Road, Shirley, New York, 11967-4704, Tel: 800-224-6339 (Int'l 631-924-9000), Fax: 631-924-9358, Email: info@biodex.com, www.biodex.com