

SS300 PROBE

Pancake Geiger for contamination measurements.

An uncompensated pancake (550V) Geiger based probe for alpha, beta and gamma contamination measurement.

SS315 PROBE

Pancake Geiger for contamination measurements.

Functionally identical to the SS300, but with a different probe geometry.

	SS300	SS315
Operating Voltage	550 V	550 V
Window	15.5 cm ² 1.6 to 2.0 mg/cm ² mica	15.5 cm ² 1.6 to 2.0 mg/cm ² mica
Measurement Range	0 - 5 kcps	0 - 5 kcps
Plateau Length	150 V	150 V
Temperature Range	-10° to +50°C	-10° to +50°C
Energy Response	20 keV - 2 MeV Gamma down to 40 keV Beta above 3 MeV Alpha	20 keV - 2 MeV Gamma down to 40 keV Beta above 3 MeV Alpha
Housing Connector	MHV	MHV
Dimensions	Ø 70 x 254 x 64 mm	Ø 70 x 180 mm
Active Area	15.5 cm ²	15.5 cm ²
Weight	280g	450 g


EFFICIENCIES

Listed as percentage of 4pi emission rate from Ø44.5 - 50.8 mm source.

Typ. Efficiencies
45% ¹³⁷ Cs
33% ⁶⁰ Co
50% ⁹⁰ Sr- ⁹⁰ Y
16% ¹⁴ C
23% ²⁴¹ Am
27% ²³⁸ Pu

SS330 PROBE

Compensated pancake Geiger for dose rate measurement.

An excellent general purpose end window GM probe with H*(10) energy compensation, which permits reliable measurements from ambient background up to 1 mSv/hr.

SS335 PROBE

Compensated pancake Geiger for dose rate measurement.

Functionally identical to the SS330, but with a different probe geometry.

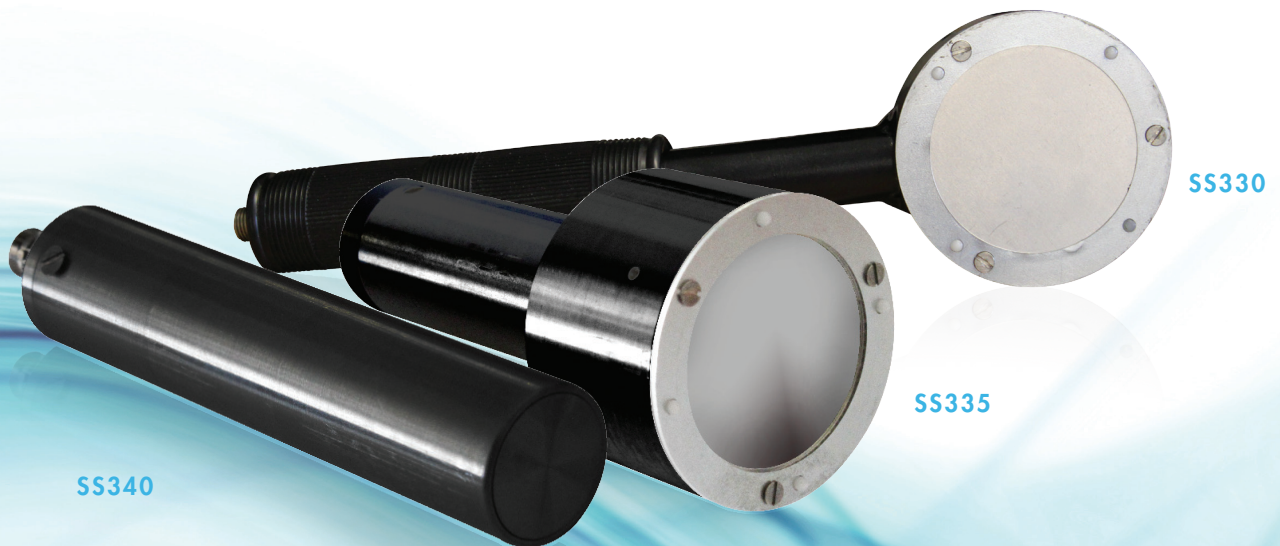
SS340 PROBE

Side window Geiger probe for ambient gamma radiation measurement, to H*(10).

Range: 0 - 2 mSv/hr

Energy: 45 keV - 2 MeV

	SS330	SS335	SS340
Operating Voltage	550 V	550 V	500 V
Measurement Range	0.1 µSv/hr - 1 mSv/hr	0.1 µSv/hr - 1 mSv/hr	0.1 µSv/hr - 2 mSv/hr
Plateau Length	150 V minimum	150 V minimum	200 V minimum
Dead Time	100 µs	100 µs	110 µs
Temperature Range	-10°C to +50°C	-10°C to +50°C	-10°C to +50°C
Gamma Sensitivity	Typically 5 cps/µSv/hr	Typically 5 cps/µSv/hr	Typically 2 cps/µSv/hr
Energy Sensitivity	H*(10) for 20 keV - 1.5 MeV	H*(10) for 20 keV - 1.5 MeV	H*(10) for 45 keV - 1.5 MeV
Housing Connector	MHV	MHV	MHV
Dimensions	Ø 70 x 254 x 64 mm	Ø 70 x 180 mm	Ø 25 x 135 mm
Active Area	15.5 cm ²	15.5 cm ²	40 mm
Weight	300 g	450 g	100 g



Scientific House, The Henfield Business Park,
Shoreham Road, Henfield, West Sussex, BN5 9SL
Tel: +44 (0)1273 497600
Email: info@southernscientific.co.uk