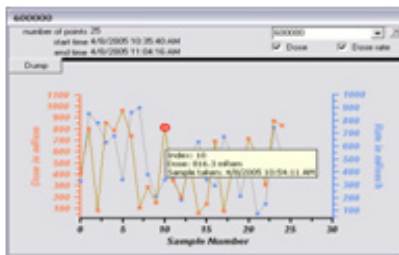




Name	Job	ID	Dose	Rate	Timer	Status	LastContact
Dosimeters							
APM 1	Detector Tower	800000	828.10 mRem	524.30 mRem/h	00:00:30	L	4/9/2005 11:04:18 AM
Area or Survey							
Description	Location	ID	Rate	Timer	Status	LastContact	
APM 8	Shield Wall	800007	388.00 mRem/h	00:00:00	L	4/9/2005 11:04:18 AM	
APM 7	Shield Wall	800006	358.00 mRem/h	00:00:00	L	4/9/2005 11:04:18 AM	
APM 6	Shield Wall	800005	134.00 mRem/h	00:00:00	L	4/9/2005 11:04:18 AM	
APM 5	Inside	800004	213.00 mRem/h	00:00:00	L	4/9/2005 11:04:18 AM	
APM 4	Inside	800003	872.00 mRem/h	00:00:00	L	4/9/2005 11:04:18 AM	
APM 3	Inside	800002	521.00 mRem/h	00:00:00	L	4/9/2005 11:04:18 AM	
Air Monitors							
Description	Location	ID	Rate	Timer	Status	LastContact	

6000005 X
 558.7 mRem
 772 mRem/h
 Status OK
 ARM 6
 Shield Wall

6000001 X
 408.3 mRem
 541 mRem/h
 Status OK
 ARM 2
 Inside



WINWRM2 Remote Monitoring Software

WinWRM2 is designed for real-time monitoring of radiation detection devices, providing live display of dose and dose rate information from electronic dosimeters, portable instruments and continuous air monitors.

FEATURES...

- Stand alone or network connectivity
- Real-time display of data & trend graph
- Text message notification
- Tabular and Icon data display
- Roster management



health physics

A Mirion Technologies Division

Featuring:



SYSTEM REQUIREMENTS:

Computer Platform

- INTEL Pentium 500MHz PC or 100% compatible with a keyboard and bus mouse
- 256 Megabytes RAM
- 500 Megabytes free on hard drive after installation of Windows (1Gig for x64-bit systems)
- SVGA video card and monitor capable of 800 x 600 resolution
- One CD ROM drive
- WRM Plus or WRM2 Base Receiver
- DMC 90, DMC 100, DMC 2000 dosimeters with transmitters; AMP-DRM-RAMION-Telepole portable instruments with eternal transmitters; AM-16, DDC-16
- A TCP/IP network as described in the previous section and/or one serial port configured for use under Windows
- A supported version of Microsoft Windows with TCP/IP drivers loaded for the network device noted above.
- Microsoft .NET Runtime Library, DOTNETFX.EXE

Network (optional)

To use the system with a Network Device, the system requires TCP/IP to be installed on the target systems according to the following minimum requirement:

- A Windows compatible network device for installation of TCP/IP. This will be a NIC card for network operation or may be a serial port for dialup access or stand alone operation.
- An MS Windows compatible TCP/IP route between the WinWRM2 host system and the Network Device (s) that will allow unfiltered TCP/IP connections using the selected TCP/IP Port.



MIRION Health Physics
TECHNOLOGIES Division

www.mirion-hp.com

5000 Highlands Parkway
Suite 150
Smyrna Georgia 30082
USA
T +1.770.432.2744
F +1.770.432.9179

BP 1
F-13113 Lamanon
France
T +33 (0) 4 90 59 59 59
F +33 (0) 4 90 59 55 18

P.O. Box 506
FI-20101 Turku
Finland
T +358 2 4684 600
F +358 2 4684 601

Ruhrstrasse 49
D-22761 Hamburg
Germany
T +49 40 85193 0
F +49 40 85193 256

